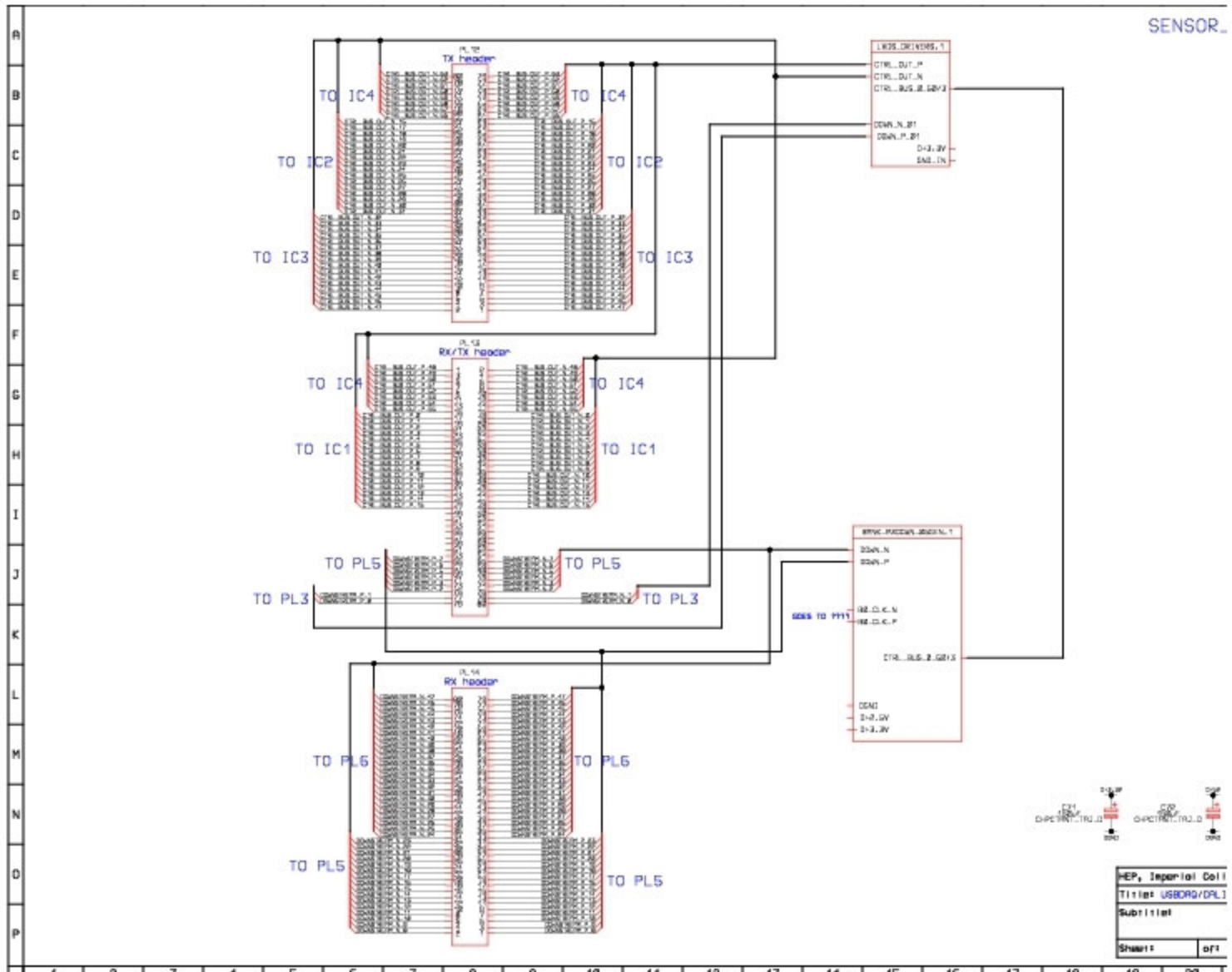
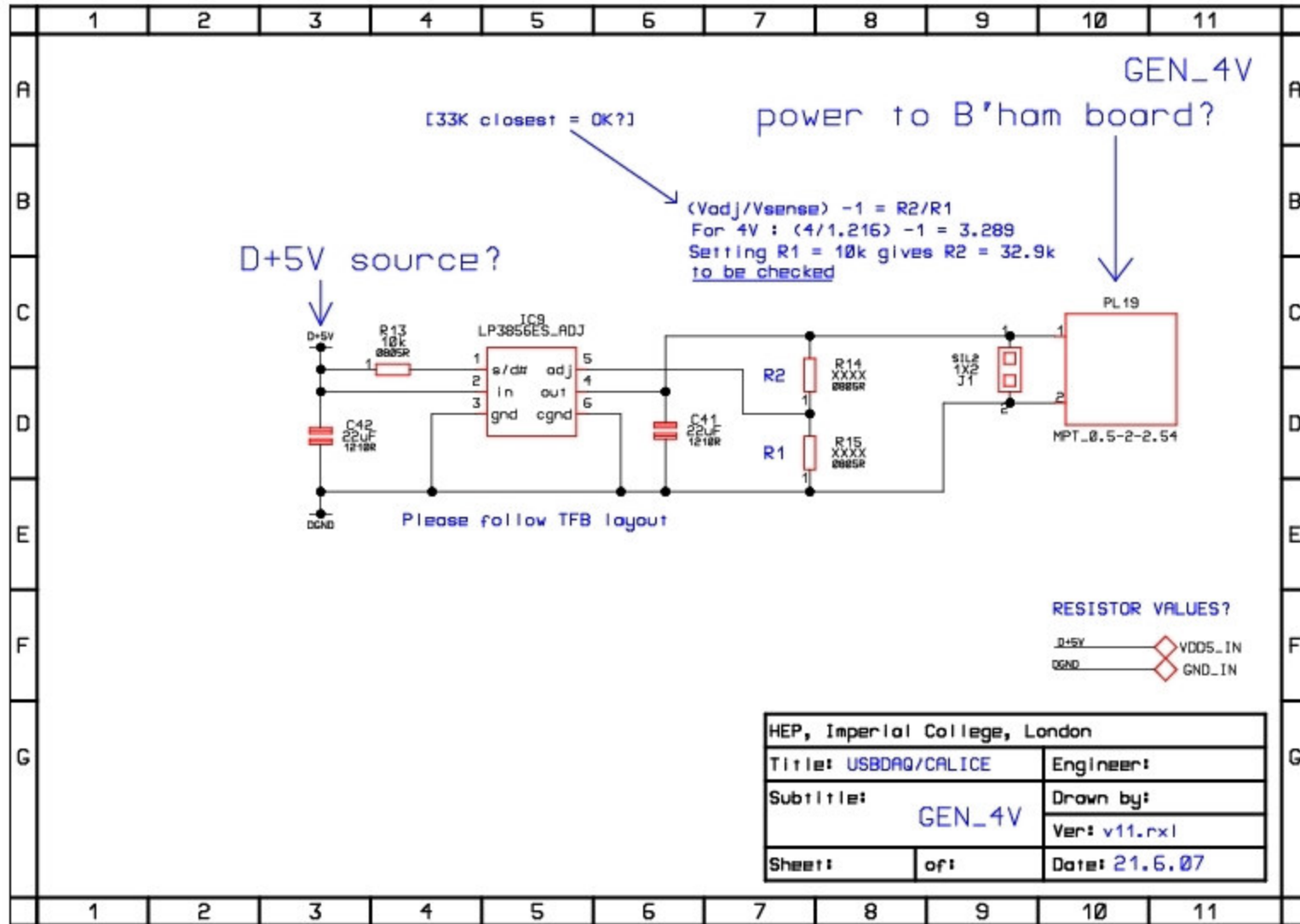

Calice MAPS Adapter Card Review

M. Noy
26th June 2007

Overview I

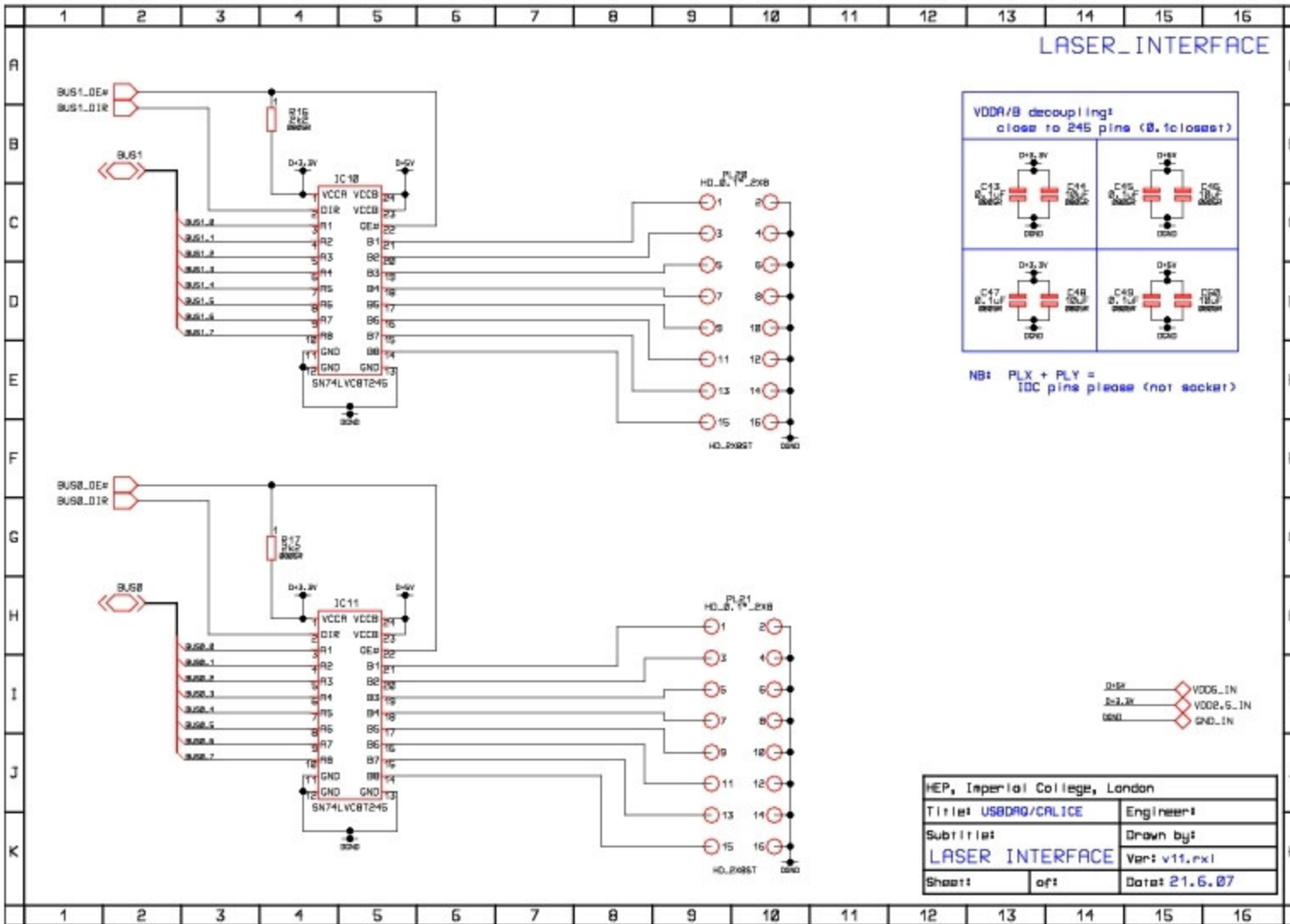
- Adapter Card:
 - Connector interface
 - 3x 0.05" pitch IDC header
 - 80 way each
 - 65 Upstream pairs (away from PC)
 - 49 downstream pairs (towards PC)
 - 6 pairs spare
 - LVCMOS to LVDS drivers used to reduce pin count
 - 4V
 - linear regulator from 5V
 -





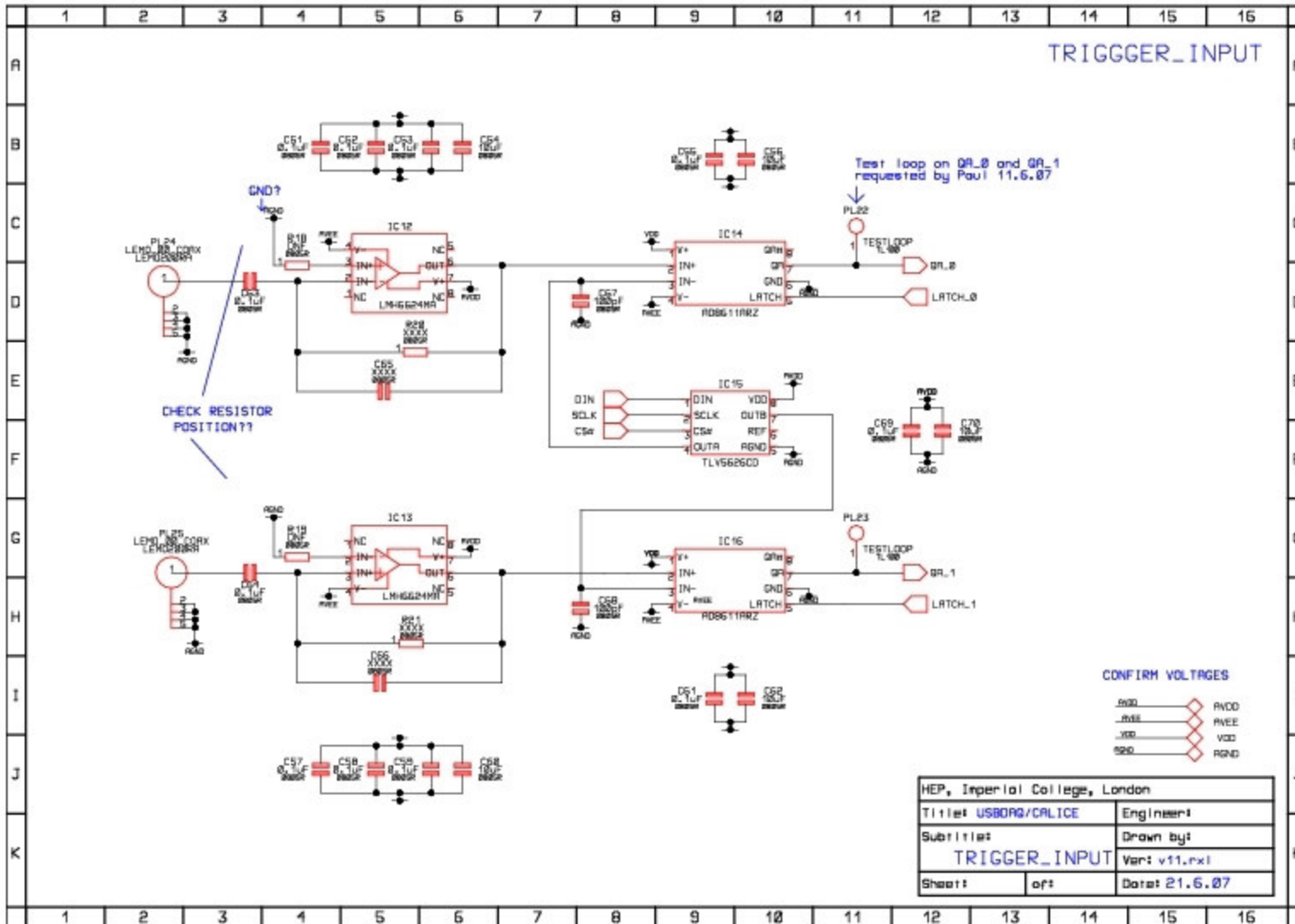
Overview II

- Board synchronisation interface
 - Allows boards to function as master or slave
 - 4 output clocks
 - 1 input clock
 - 4x data interface
 - 2 send and 2 receive each
 - System will support max. of 4 slaves
- Laser interface
 - 8x TTL send
 - 8x TTL receive

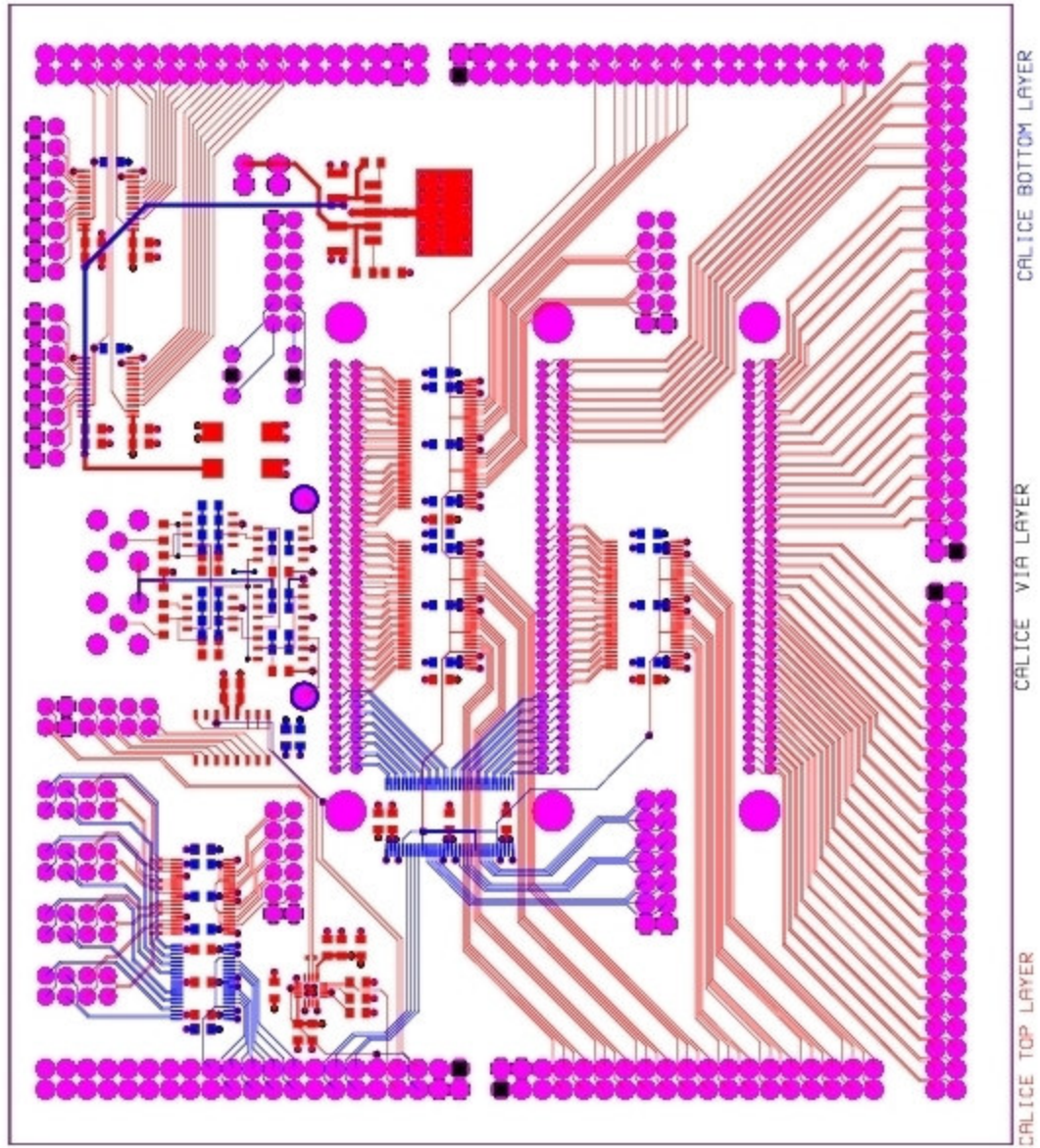


Overview III

- Trigger interface
 - Supposed to replace NIM crate + associated
 - 2x PMT interfaces using
 - fast op-amp
 - Comparator
 - DAC
- Prototype doesn't work
 - Sarah did the layout anyway whilst I was on holiday
- If there's space (and it works) move to 3 to increase flexibility



Layout



Status & To do

- Currently
 - Quotation requested yesterday
 - Part procurement about 60% done
- To Do
 - Check interface to Vladimir's board
 - Make trigger work
 - + Add channel
 - Silk screen

To do
