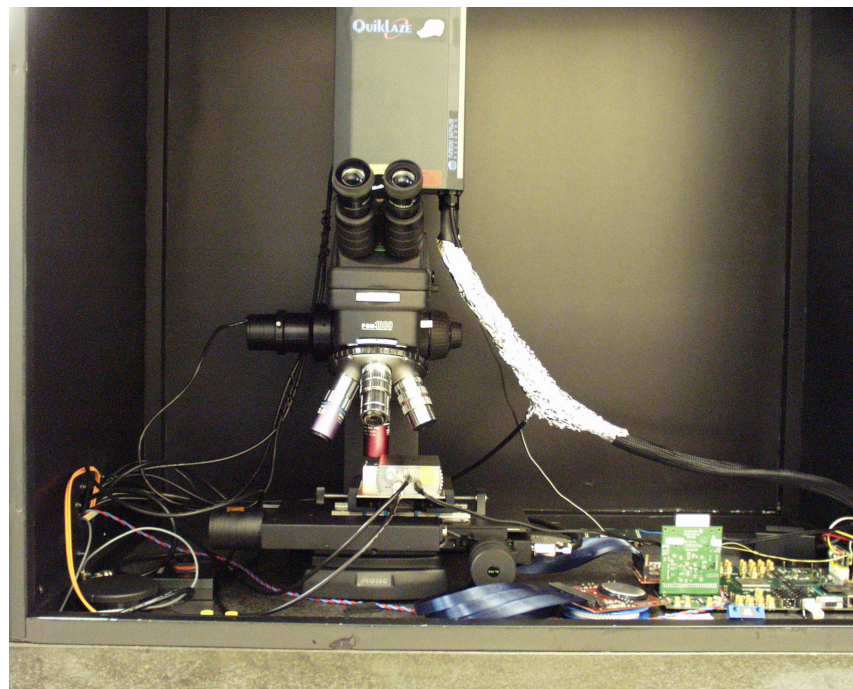
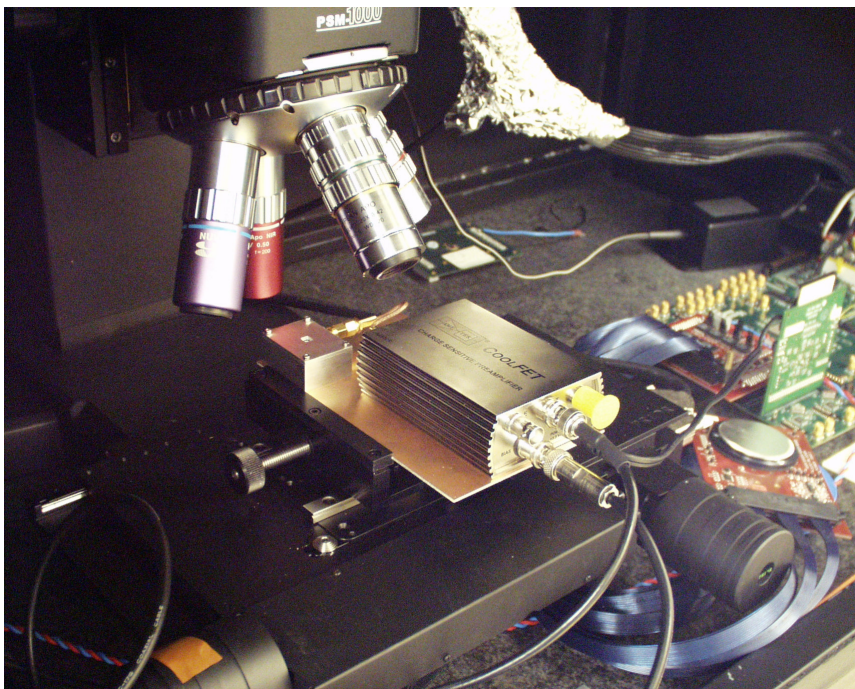


## CALICE pixel Laser testing



### Laser calibration update

- Si detector coupled to low noise CA + differentiator (no shaper)  $G \sim 25\text{mV/MIP}$
- laser intensity lowered by 11 odg!

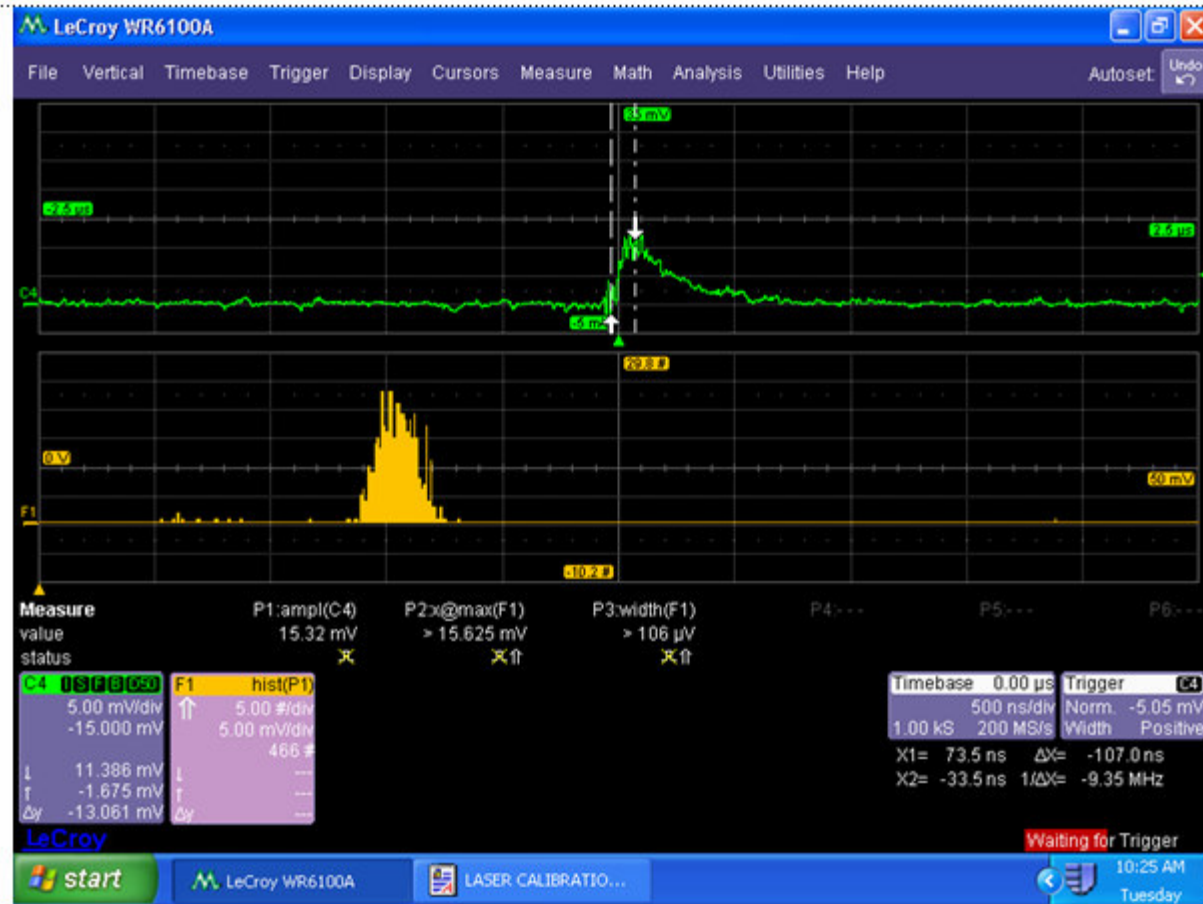
# CALICE pixel Laser testing



Sensor covered, EMP noise

G.Villani Jun. 07

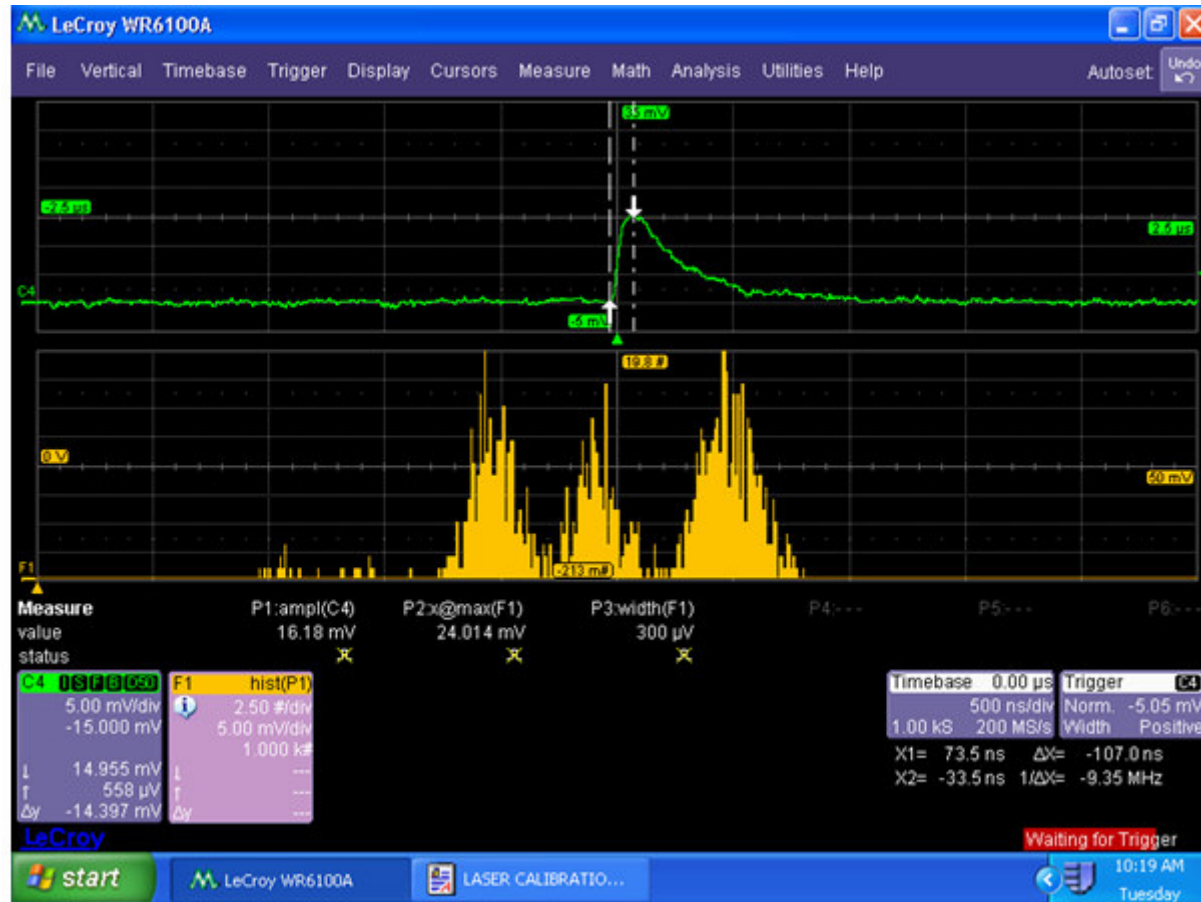
# CALICE pixel Laser testing



Sensor illuminated, 0% laser intensity

G.Villani Jun. 07

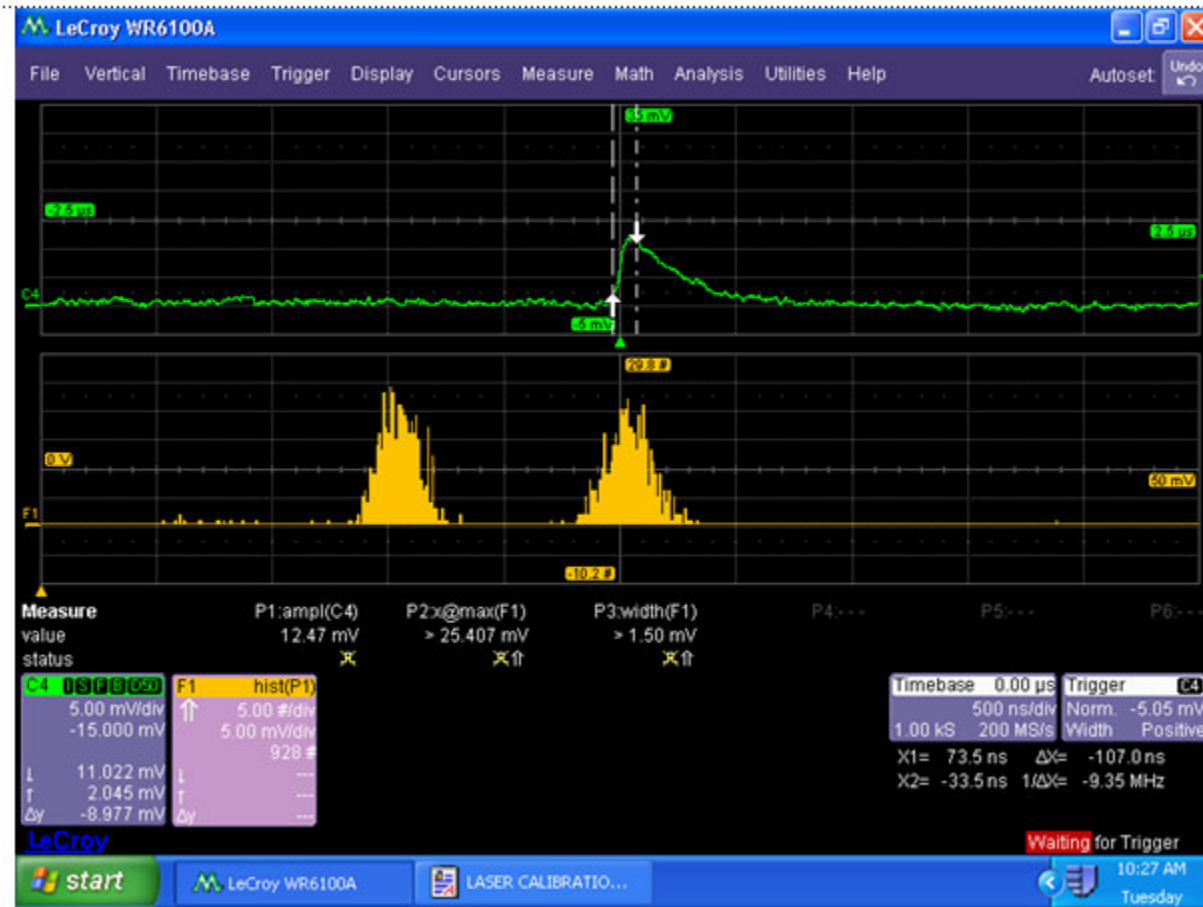
# CALICE pixel Laser testing



Sensor illuminated, 50,75,100% laser intensity

G.Villani Jun. 07

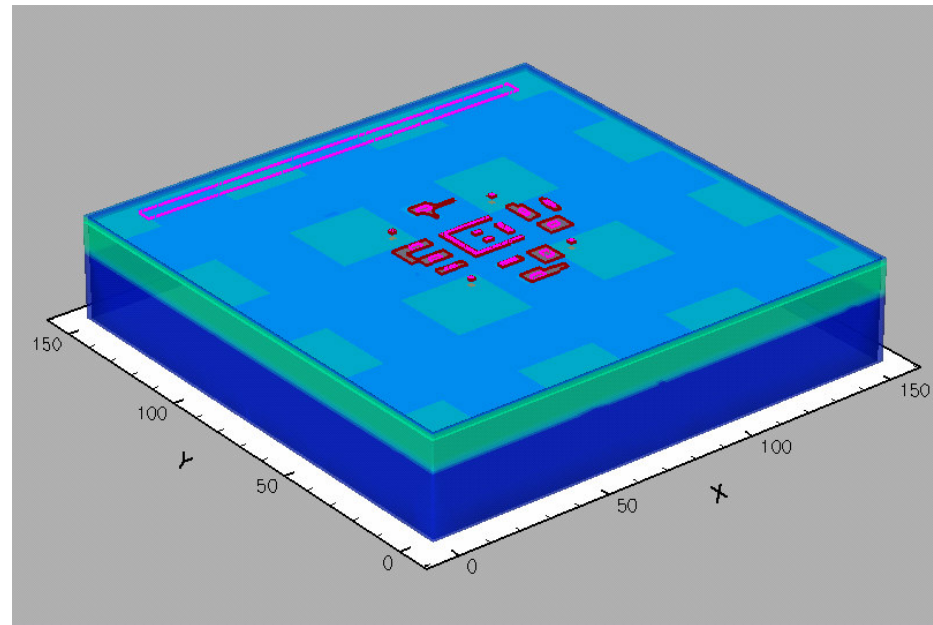
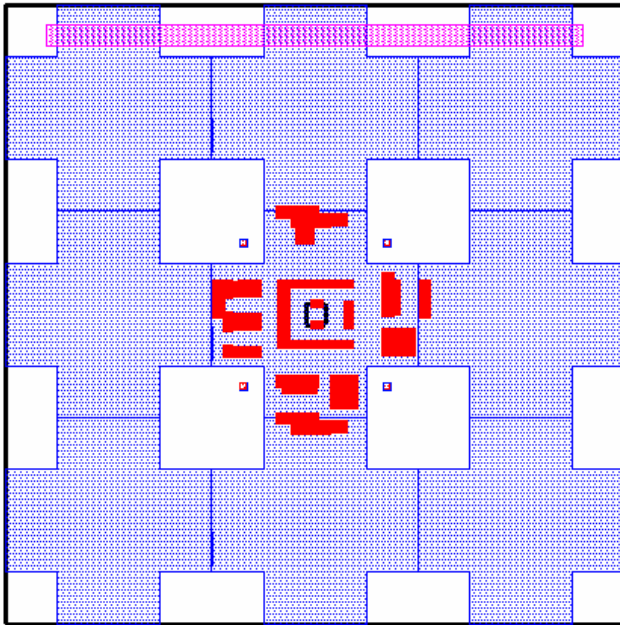
# CALICE pixel Laser testing



Sensor illuminated, 0 and ~80% laser intensity (MIP eqv)

G.Villani Jun. 07

# CALICE pixel Deep P-Well simulation



3D simulation of final layout with all around DPW  
 $\Delta Q \sim 10\% @ 2.2 \cdot 10^5$  points

## CALICE pixel summary

### **Conclusions**

- Laser calibration progressing well: sub-mip calibration seems achievable!
- Full pixel simulation with final layout started