

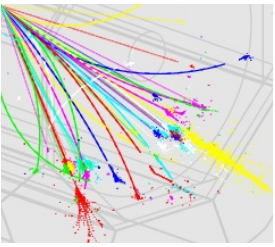
More ^{55}Fe plots

RAL 06.10.2008

M. Stanitzki



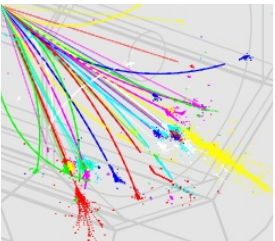
Since last time



- More statistics
 - about 3000 pixels (and counting)
 - Still ongoing, have another 2100 pixels to look at
- Pedestal files a la Paul with no trims applied
 - Seems to work well
 -

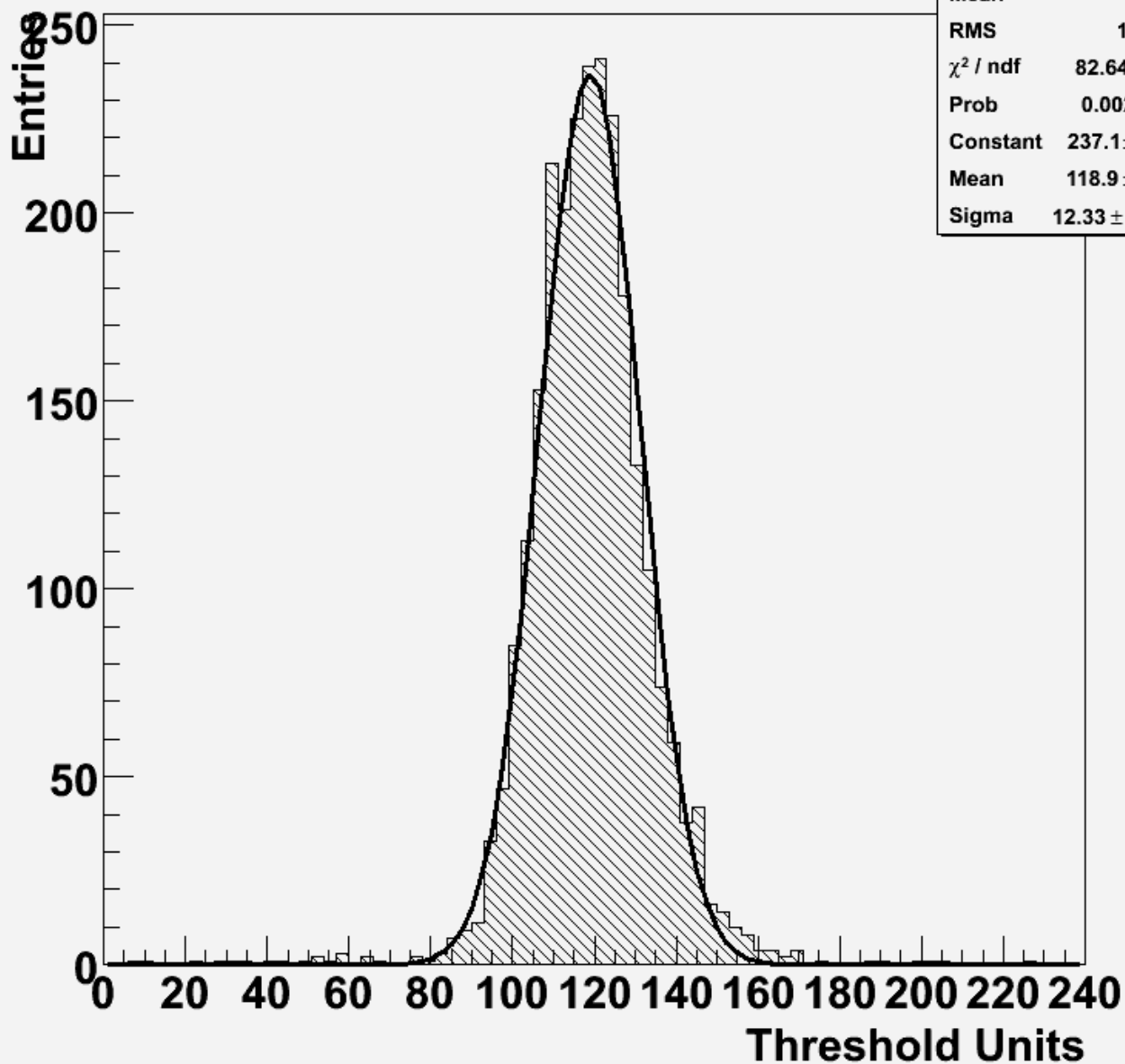


Results -quad 0



^{55}Fe Mean with ped. corr. - Shaper Variant 0

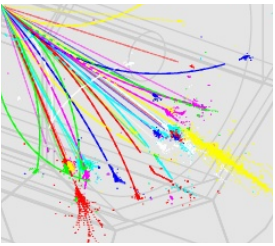
Fit mean 1 ped



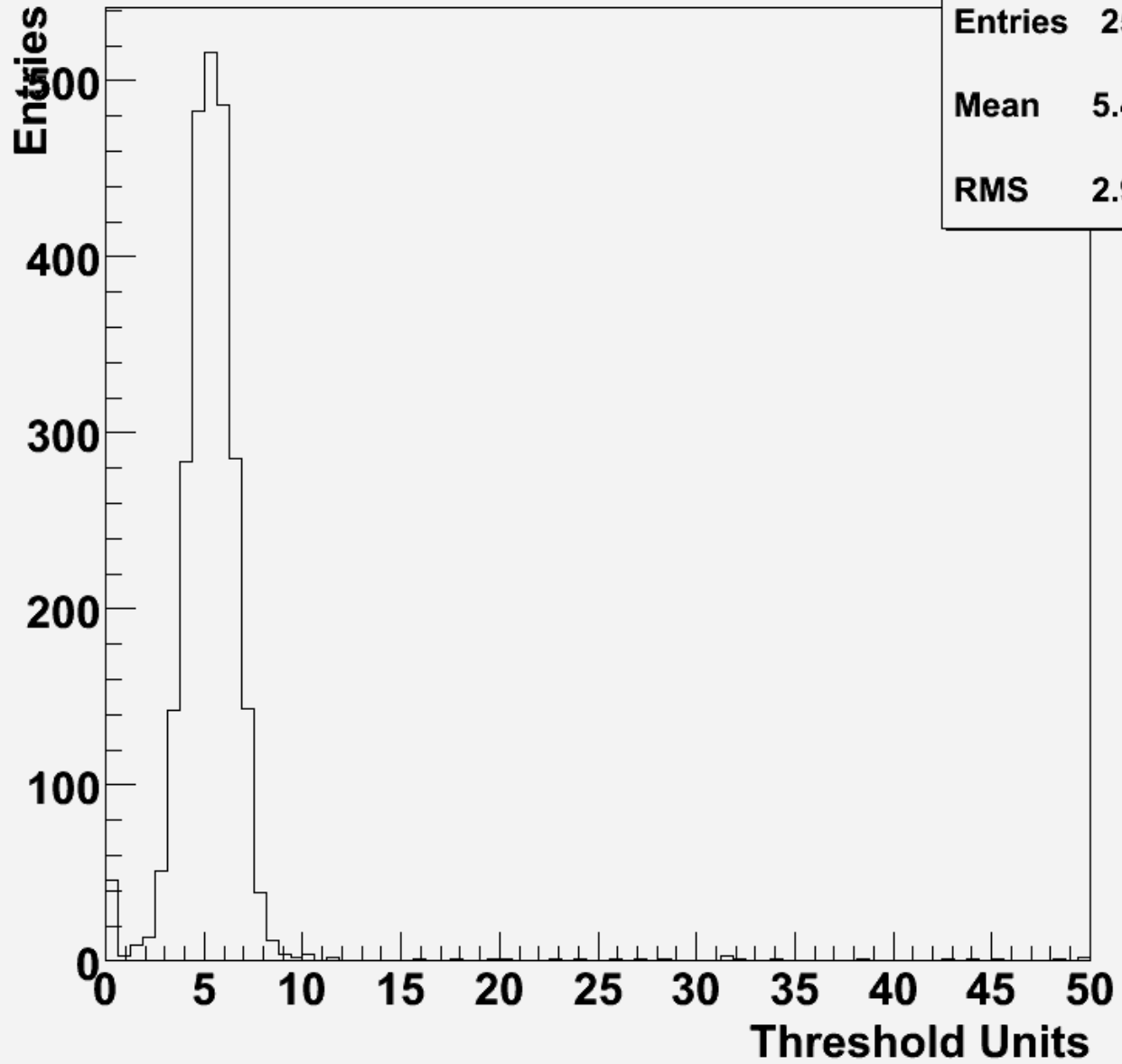
Parameter	Value
Entries	2545
Mean	119
RMS	15.12
χ^2 / ndf	82.64 / 50
Prob	0.002512
Constant	237.1 ± 6.2
Mean	118.9 ± 0.3
Sigma	12.33 ± 0.20



Sigma quad 0



Fit sigma 1

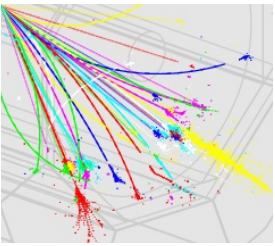


Fit sigma1

Entries	2545
Mean	5.445
RMS	2.967

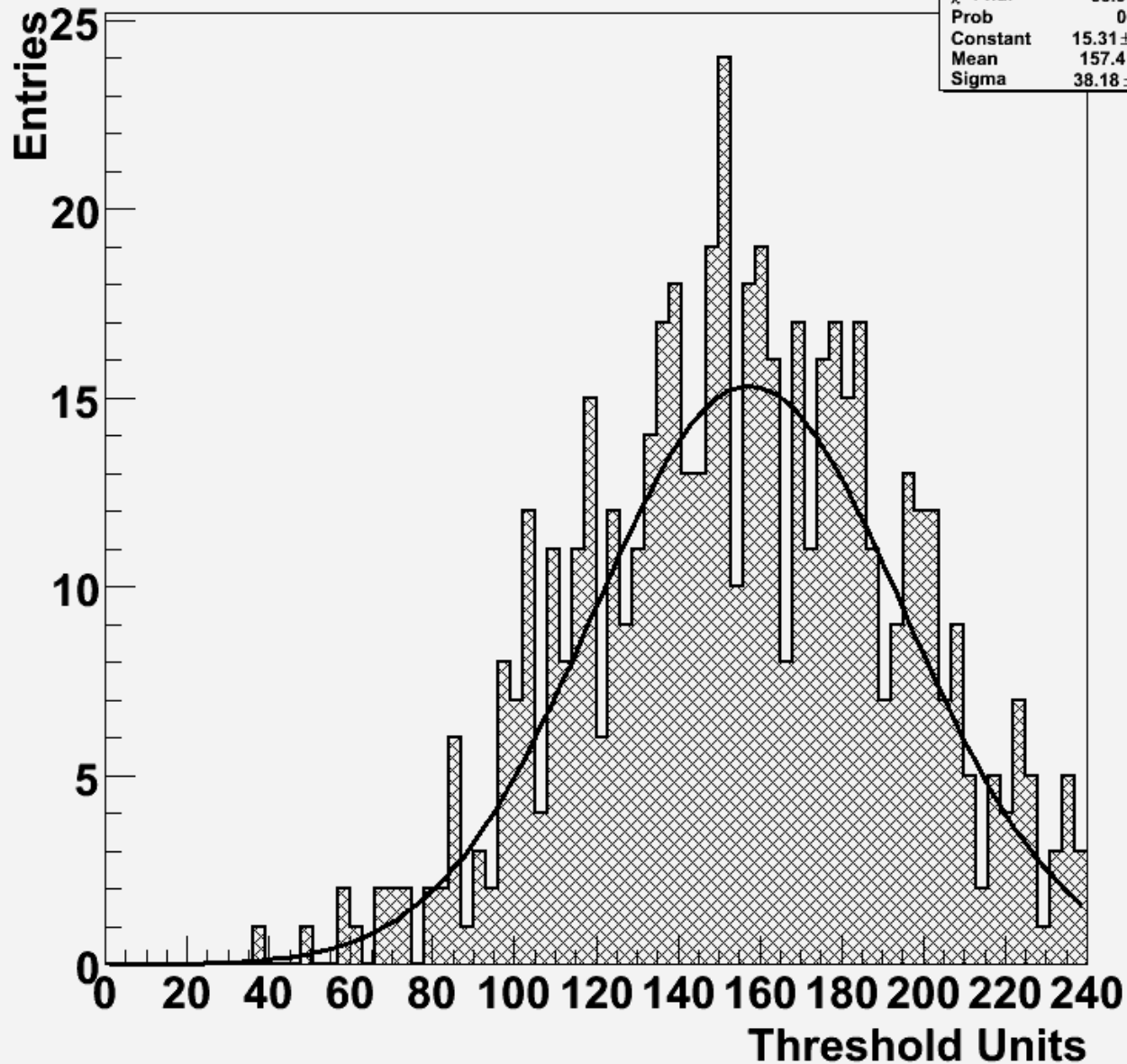


Results quad 1

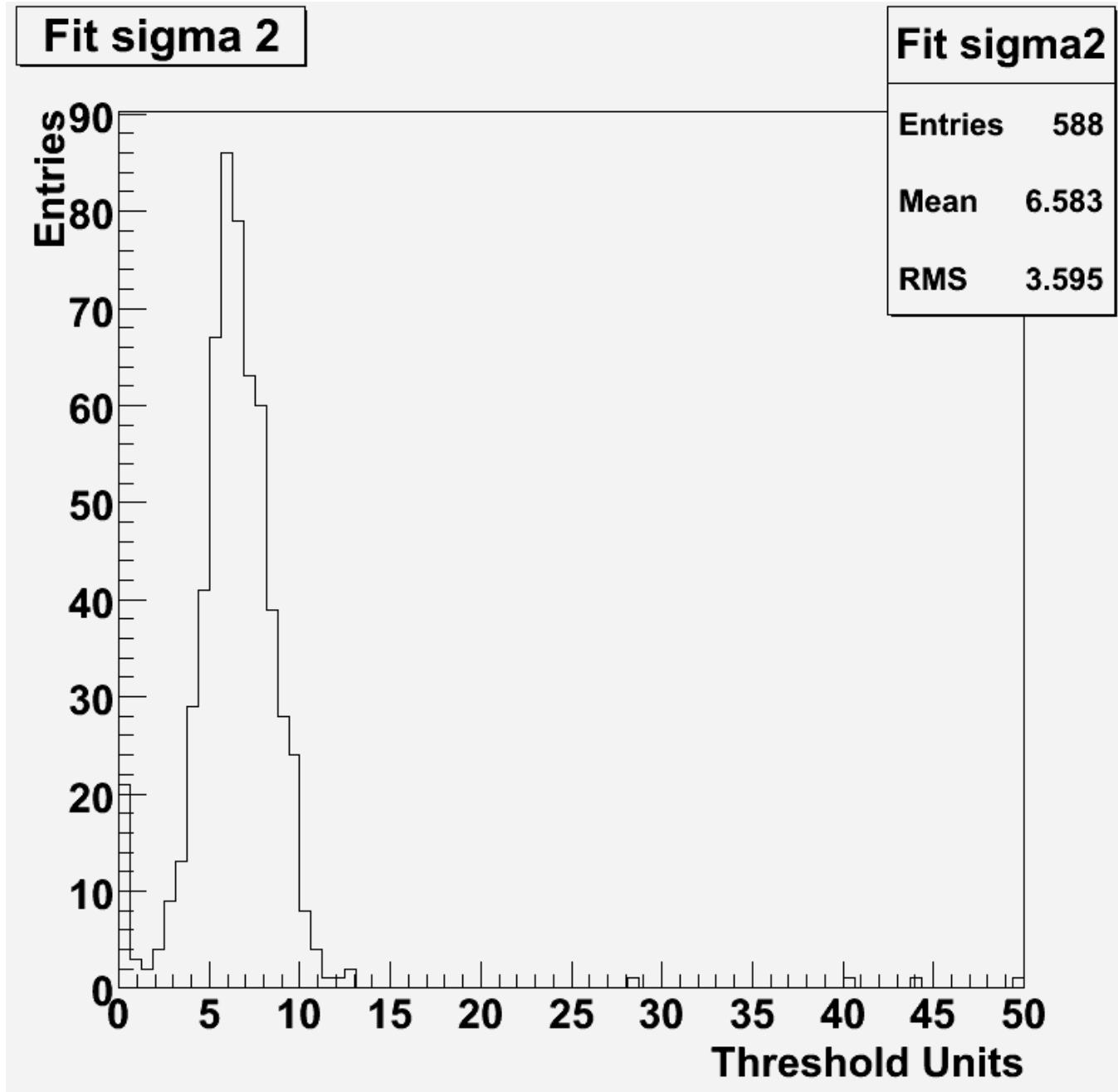
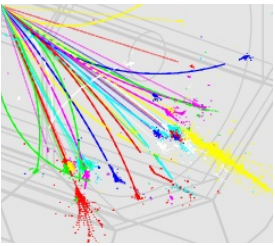


^{55}Fe Mean - Shaper Variant 1

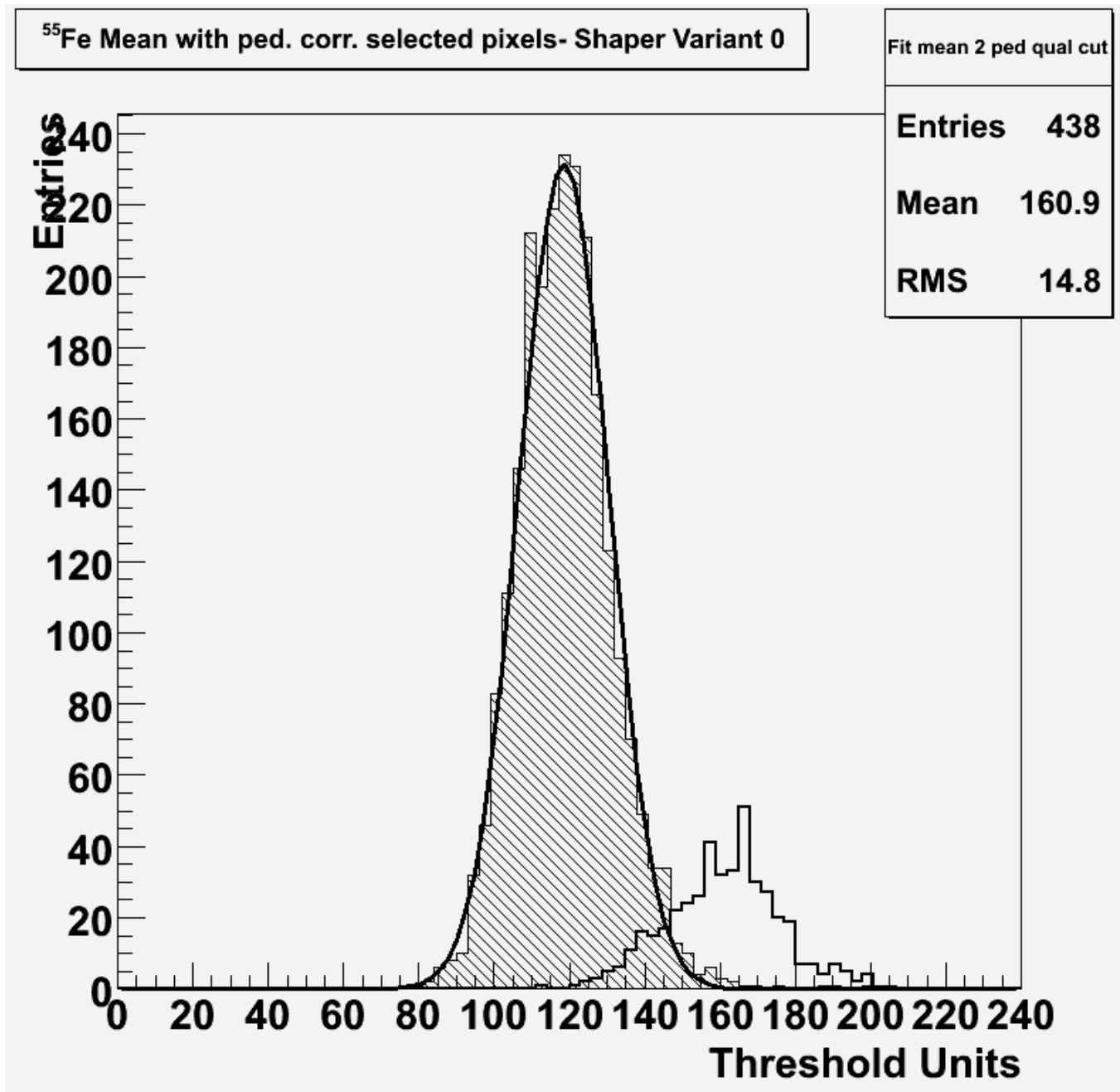
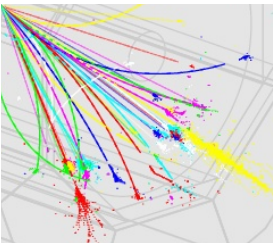
Fit mean 2	
Entries	588
Mean	156.1
RMS	37.98
χ^2 / ndf	65.94 / 58
Prob	0.2213
Constant	15.31 ± 0.92
Mean	157.4 ± 1.9
Sigma	38.18 ± 1.71



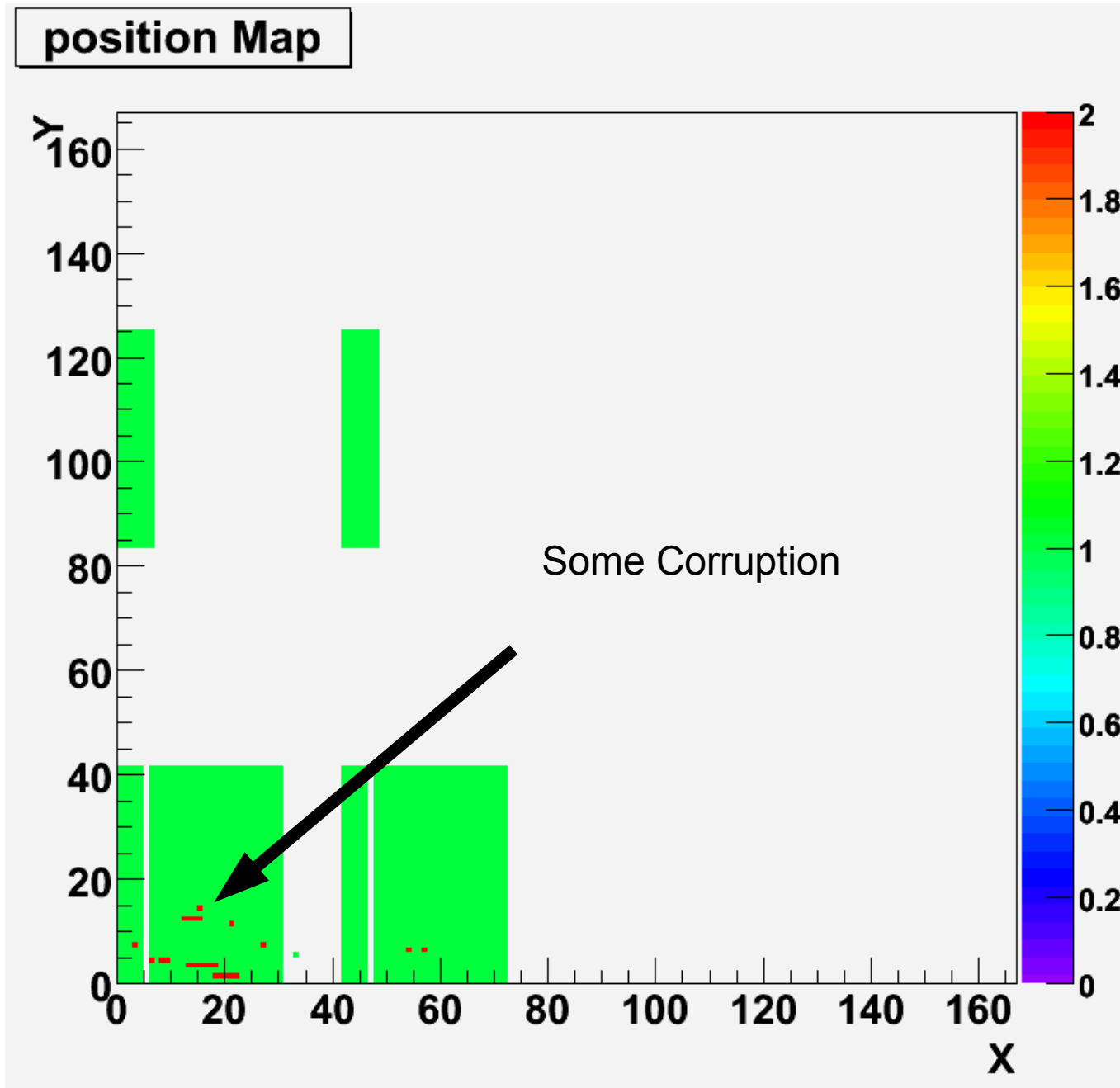
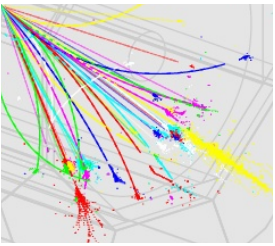
Sigma quad 1



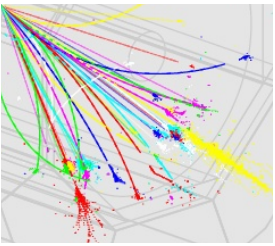
Some cleaning



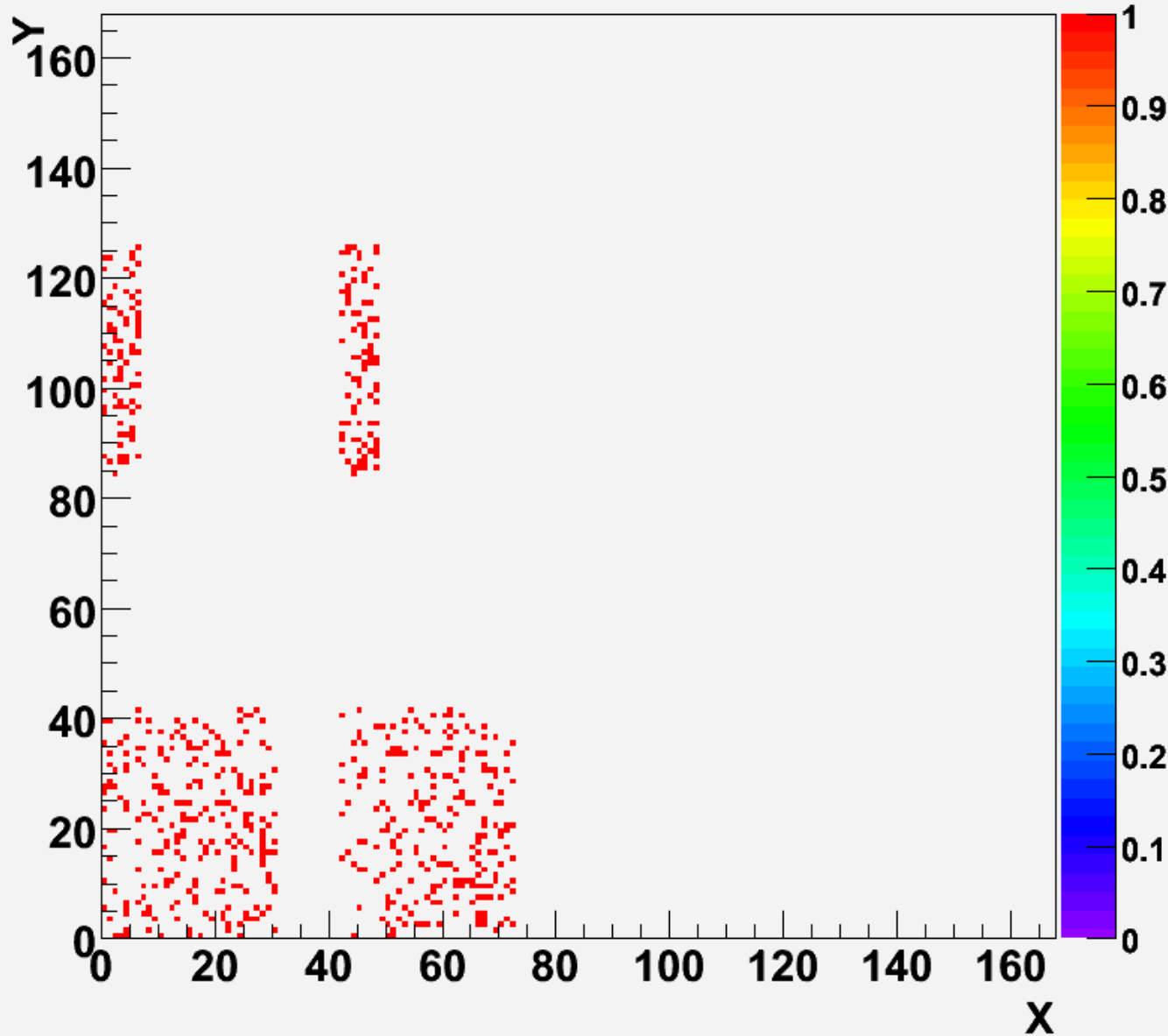
Which pixels so far



After Glow



Map AfterGlow



After Glow rate

