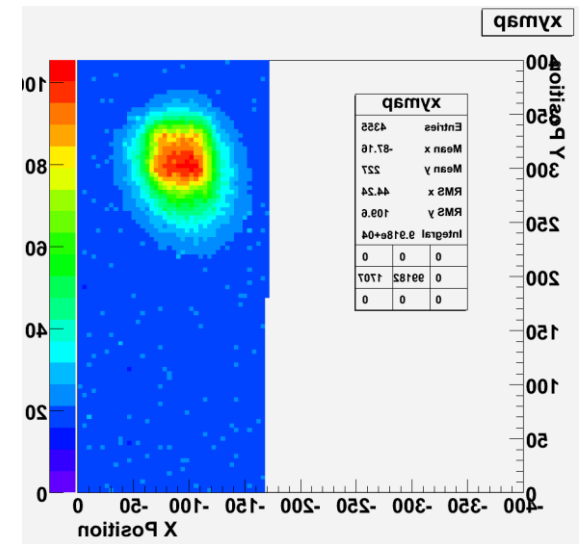
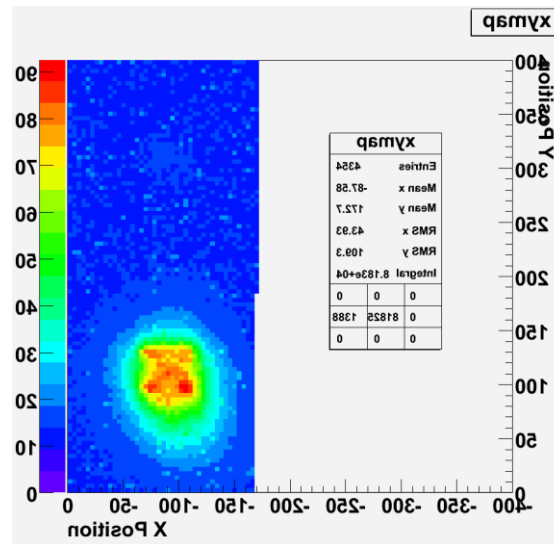
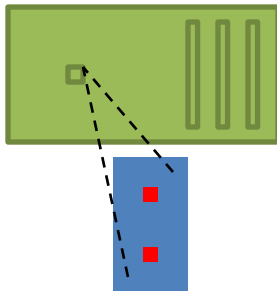
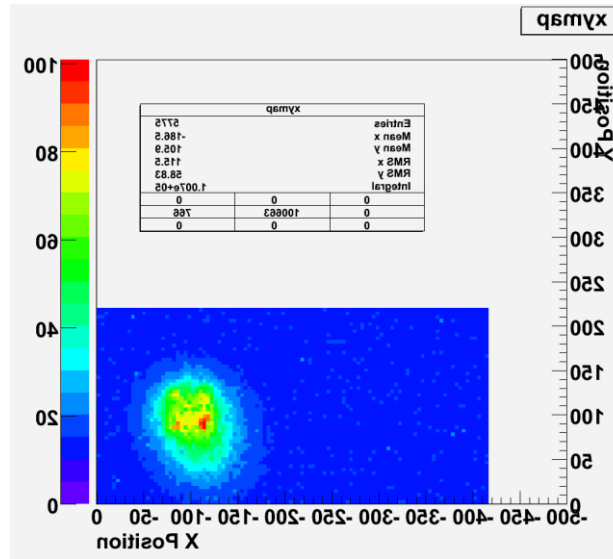
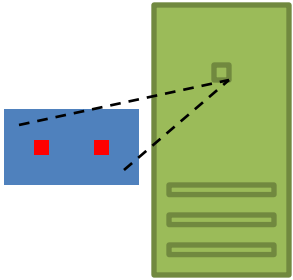


TPAC1.1 Testing

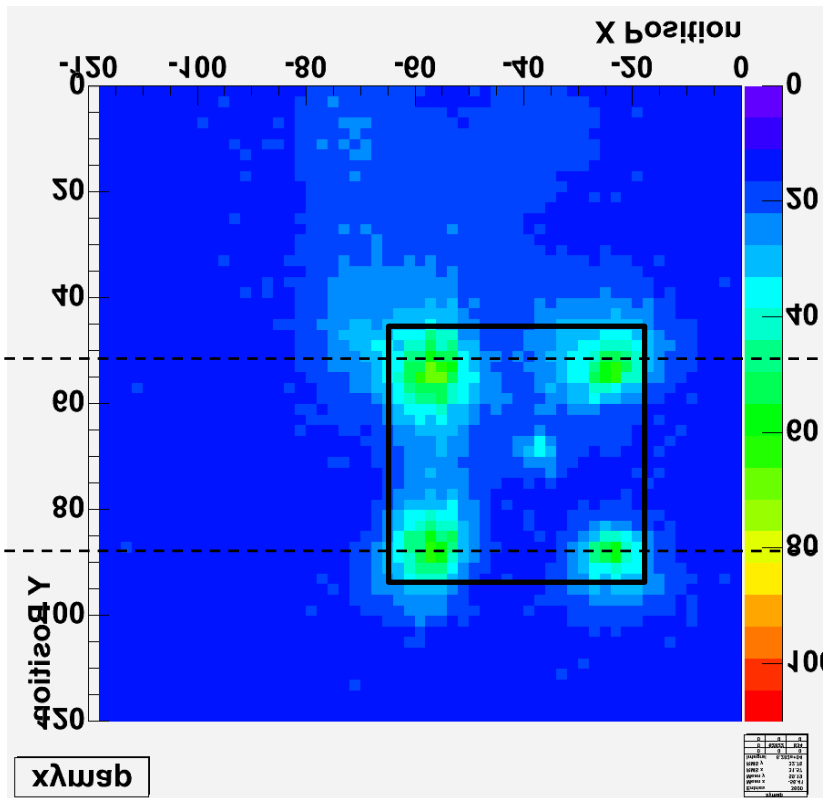
JC/Feb 27th 2009

Pixel scans with rotation

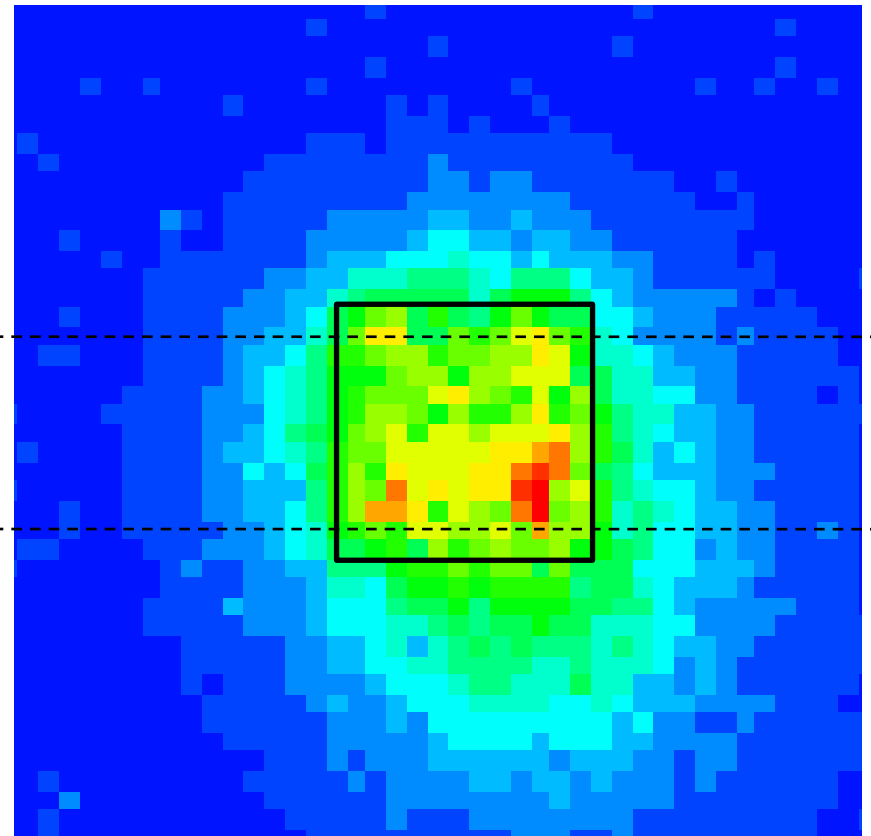


Shorter run; lower statistics; hence more "noise" due to resets

Detail scans (in progress)

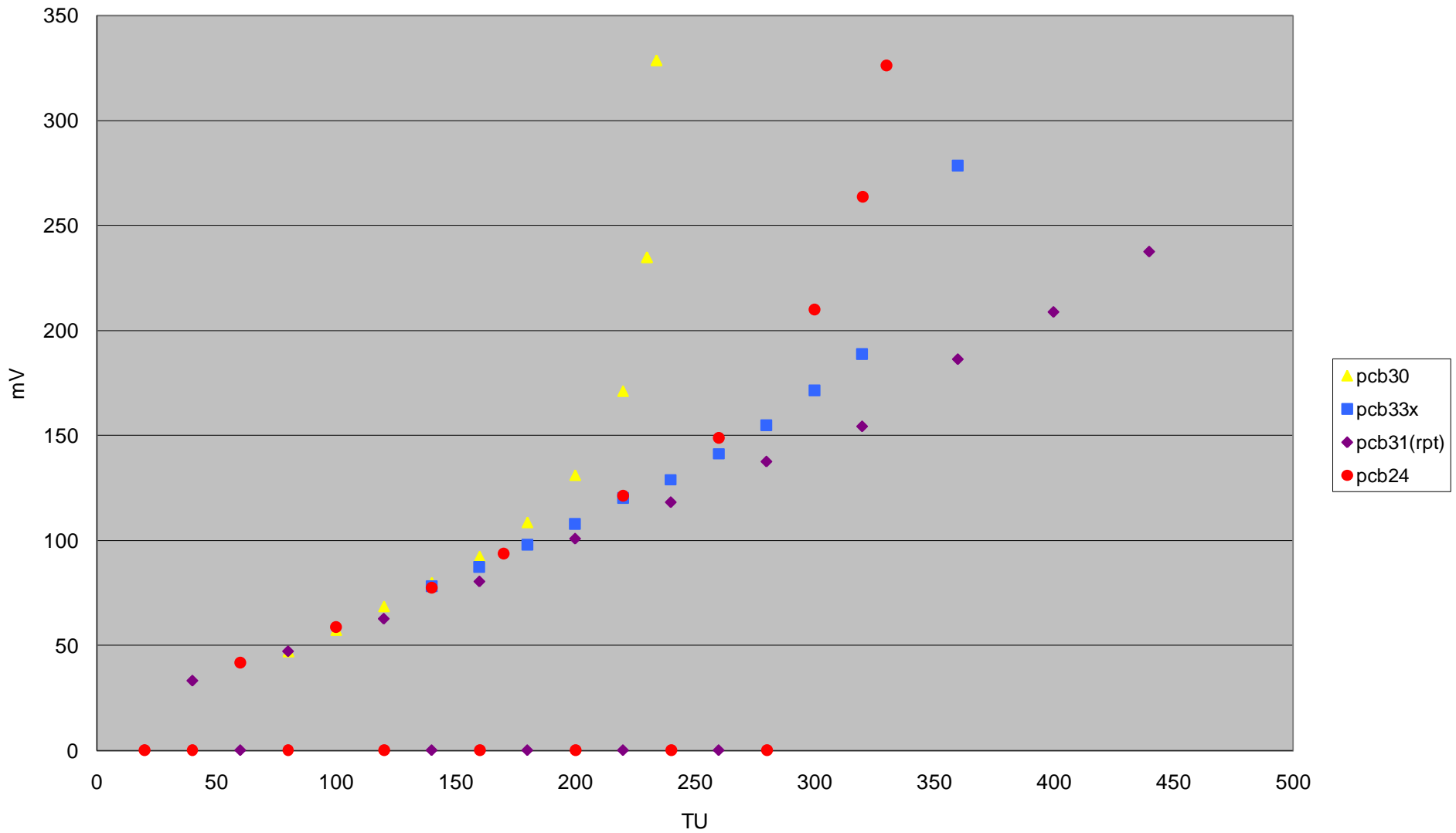


12u no DPW: 2um resolution

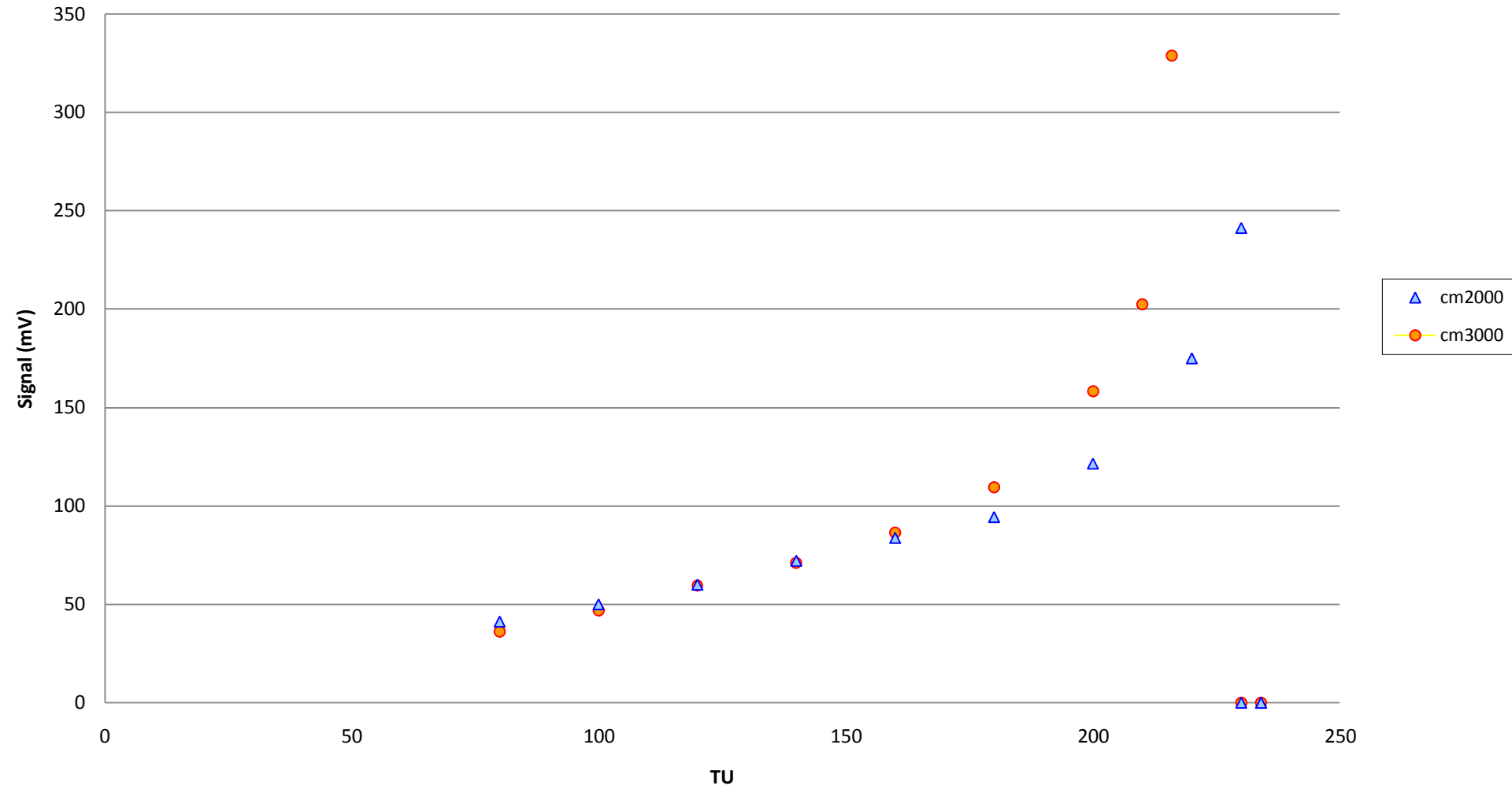


12u with DPW: 4um resolution

TU calibration for different sensors



TU calibration vs Common Mode (pcb30)



Next steps

- TU calibration vs trim
- Laser/tilt studies
 - Low spatial resolution for different sensor tilt angles
- TU calibration for TPAC1.0
- Full set of 2um resolution scans
 - 12/5/DPW/NoDPW